

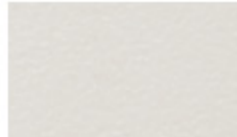
Standard Colors and Finishes

Finishes

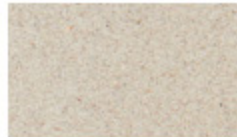
Each of the 21 standard colors is available in the 4 finishes shown below.



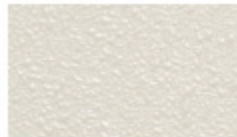
Gloss— Add suffix G to color code



Matte— Add suffix M to color code



Sand— Add suffix S to color code



Orange Peel— Add suffix O to color code

Colors and finishes are presented as accurately as this reproduction process allows and may not be accurate. If color and finish are critical, order a color/finish sample before placing your order. Old Town Fiberglass can only ensure that actual product colors and finishes are a close match to our production samples.

Old Town Fiberglass, Inc.
456 South Montgomery Way
Orange, CA 92868-4015

Tel: 714.633.3732

Fax: 714.633.3917

E-mail: Info@OldTownFiberglass.com

On-line: OldTownFiberglass.com

Colors

The 21 standard colors are shown below in Gloss (G) finish. Each color is also available in Matte (M), Sand (S) and Orange Peel (O) finish. To specify finish add the add suffix G, M, S or O to the color name and code number. Custom colors and textures are available on request.



Beige 01—(add suffix G, M, S or O)



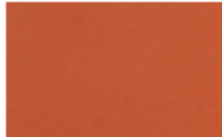
Toast 08—(add suffix G, M, S or O)



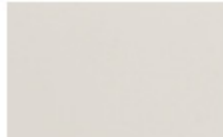
White 15—(add suffix G, M, S or O)



Citrus 02—(add suffix G, M, S or O)



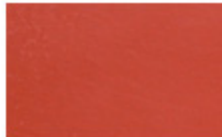
Clay 09—(add suffix G, M, S or O)



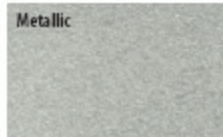
Light Gray 16—(add suffix G, M, S or O)



Ochre 03—(add suffix G, M, S or O)



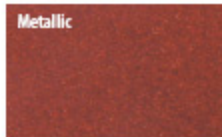
Terra 10—(add suffix G, M, S or O)



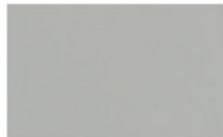
Aluminum 17—(add suffix G, M, S or O)



Lime 04—(add suffix G, M, S or O)



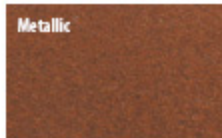
Copper 11—(add suffix G, M, S or O)



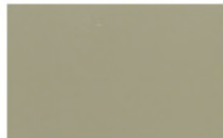
Med. Gray 18—(add suffix G, M, S or O)



Teal 05—(add suffix G, M, S or O)



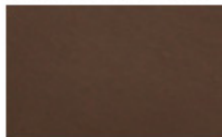
Bronze 12—(add suffix G, M, S or O)



Taupe 19—(add suffix G, M, S or O)



Aqua 06—(add suffix G, M, S or O)



Chocolate 13—(add suffix G, M, S or O)



Dark Gray 20—(add suffix G, M, S or O)



Blue 07—(add suffix G, M, S or O)



Dark Wine 14—(add suffix G, M, S or O)



Black 21—(add suffix G, M, S or O)